

ALINCO

DR-590T / DR-590E

VHF/UHF FM

TWIN BAND MOBILE TRANSCEIVER



SPECIFICATIONS

DR-590T



DR-590E



General

Frequency coverage:

- DR-590T (U.S. Version)
144.000-147.995MHz (TX),
137.000-173.995MHz (RX),
440.000-449.995MHz (TX),
410.000-469.995MHz (RX)
- DR-590E (Europe Version)
144.000-145.9875MHz (TX & RX)
430.000-439.9875MHz (TX & RX)

Frequency Resolution:
5, 10, 12.5, 15, 20, and 25kHz steps

Antenna Impedance:
50 Ohms unbalance

Power Supply Requirement:
13.8 Volts D.C.

Current Drain at **13.8V**

Receiving
Squelched: does not exceed 800mA

Transmitting
VHF High: 45W approx. **9.5A**
Middle: 10W approx. **4.5A**
Low: 5W approx. **3.5A**
UHF High: 35W approx. **15A**
Middle: 8W approx. **5A**
Low: 4W approx. **4A**

Dimension:
150mm(W) X 50mm(H) X 178mm(D)

(5-9/10") (2") (7")

Weight:
Approx. 1.5kg (3.3lbs.)

Transmitter
Output Power:
V H F High: 45W
Middle: 10W
Low: 5W
UHF High: 35W
Middle: 8W
Low: 4W

Emission Mode:
F3 (FM)

Modulation System:
Variable Reactance F.M.

Max. Frequency Deviation:
±5kHz

Spurious Emission:
-60dB or under below carrier

Microphone:
Electret Condenser Microphone

Operating Mode:
Simplex

Duplex:
5kHz and 12.5kHz steps between 0 and 10.995MHz
from receiver frequency at 144-147.995MHz and 440-449.995MHz

DTMF Encoder:
Built-in (DR-590T only)

* Receiver
Receiving System:
Superheterodyne, Dual Conversion
Modulation Acceptance:
F3 (FM)

Intermediate Frequency:
1st 21.6MHz and 455kHz at VHF
1st 30.825MHz and 455kHz at UHF

Sensitivity:
12dB SINAD -16dB

Selectivity:
±6kHz or under at -6dB
±12kHz or under at -60dB

Audio Power Output:
Approx. 2.5W

Speaker Impedance:
8 Ohms

* Accessories supplied as standard

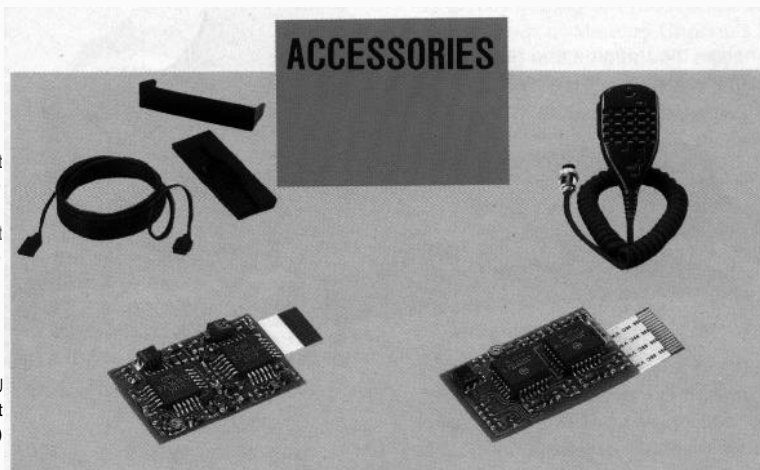
- Hand Microphone (Condenser type)
- a 16 button DTMF Microphone (DR-590T)
- b. Hand Microphone (DR-590E)
- Mobile Mounting Bracket
- Mounting Hardware
- DC Power Cable

MODEL CHART

Type	DR-590T	DR-590E
Tone Burst	Not Available	1,750 Hz
Subaudible Tone	Encode Included, Decode Optional	Optional
DTMF	Included (16 Buttons)	Optional

ACCESSORIES

- EDC-19
Separate Mounting Kit
with 3m (9ft. 10in.) Cable
- EDC-20
Separate Mounting Kit
with 5m (16ft. 5in.) Cable
- EJ-7U
Tone Squelch Unit
(for 2 bands)



- EMS-3
Remote Control Microphone
with DTMF keypad
(Standard for DR-590T)
- EMS-5
Hand Microphone
(Standard for DR-590E)
- EJ-8U
DTMF Unit
(for 2 bands)

Specifications subject to change without notice and are guaranteed for amateur band only.



ALINCO ELECTRONICS INC.

Head Office: "TWIN 21" MID Tower Building 23F, 1-61, 2-Chome, Shiromi,
Chuo-ku, Osaka No.540, Japan
Factory: i-I-I, Mishimae, Takatsuki, Osaka No.569, Japan

ALINCO ELECTRONICS INC.

438 Amapola Avenue, Unit 130, Torrance, CA 90501, U.S.A.